

Ball Transfer Unit A530-4-13

Ball Units Series A5 - Wheel S/4



-30 °C - +70 °C

swivels easily

wear resistant

shock proof

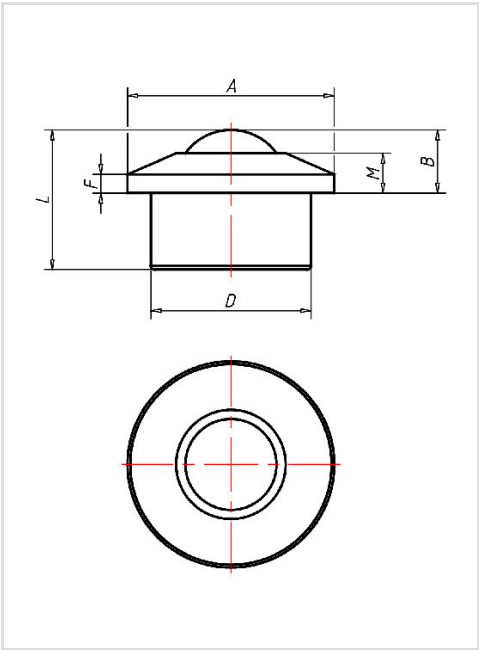
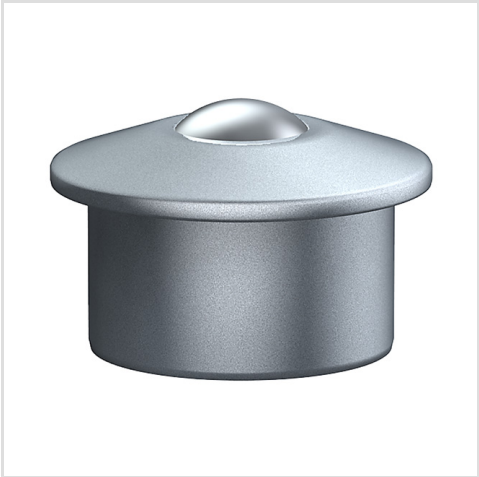
floor protective

weather proof

Wheel

Ball: zinc-plated or nylon or stainless steel

Housing, zinc-plated or stainless steel



Ball Transfer Unit	
Series:	4
Ball-Ø mm:	30
Finish housing:	steel zinc plated
Finish Balls:	carbon-steel
Load Capacity kg:	300
Load capacity tested according to EN 12530 and EN 12527	
A mm:	55
B mm:	13,8
D mm:	45
F mm:	4
G mm:	-
H mm:	-
M mm:	8,3
L mm:	37

Advantages

- ✓ bearing shell made of specially hardened steel
- ✓ Several holes to let out dirt
- ✓ Sealing lip made of wool felt
- ✓ Coned outer ring

©Copyright 2024 Rollenbau GmbH, www.rollenbau.at 02.06.2024

Applications

- Haulage way
- Assembly lines