



Ball Transfer Unit A530-4-15

Ball Units Series A5 - Wheel S/4


 -30 °C - +70 °C


swivels easily


wear resistant


shock proof

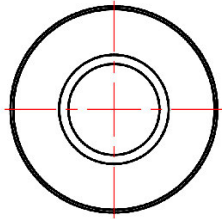
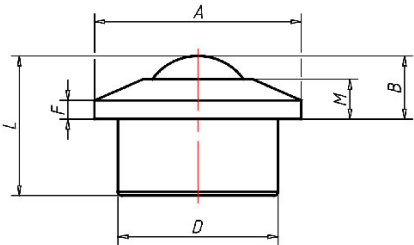

floor protective


weather proof

Wheel

Ball: zinc-plated or nylon or stainless steel

Housing, zinc-plated or stainless steel



Ball Transfer Unit

Series: 4

Ball-Ø mm: 30

Finish housing: stainless steel

Finish Balls: stainless steel

Load Capacity kg: 200

Load capacity tested according to EN 12530 and EN 12527

A mm: 55

B mm: 13,8

D mm: 45

F mm: 4

G mm: -

H mm: -

M mm: 8,3

L mm: 37

Advantages

- ✓ bearing shell made of specially hardened steel
- ✓ Several holes to let out dirt
- ✓ Sealing lip made of wool felt
- ✓ Coned outer ring

©Copyright 2024 Rollenbau GmbH, www.rollenbau.at 03.06.2024

Applications

- Haulage way
- Assembly lines