

Ball Transfer Unit A530-6-13

Ball Units Series A5 - Wheel S/6



-30 °C - +70 °C

swivels easily

wear resistant

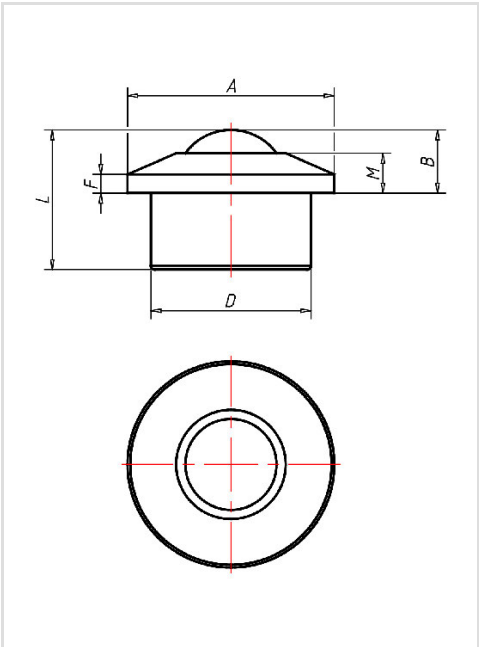
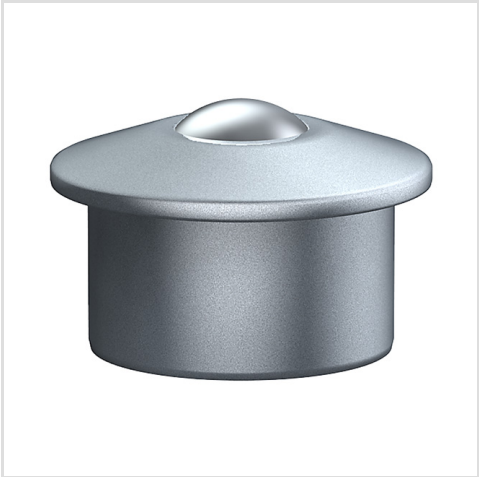
shock proof

floor protective

weather proof

Wheel

Ball: zinc-plated or stainless steel
Housing, zinc-plated or stainless steel



Ball Transfer Unit	
Series:	6
Ball-Ø mm:	30
Finish housing:	steel zinc plated
Finish Balls:	carbon-steel
Load Capacity kg:	300
Load capacity tested according to EN 12530 and EN 12527	
A mm:	55
B mm:	13,8
D mm:	45
F mm:	4
G mm:	-
H mm:	-
M mm:	8
L mm:	37

Advantages

- ✔ bearing shell made of specially hardened steel
- ✔ Several holes to let out dirt
- ✔ Sealing lip made of wool felt
- ✔ Reenforced coned outer ring for improved protection

©Copyright 2024 Rollenbau GmbH, www.rollenbau.at 03.06.2024

Applications

- Haulage way
- Assembly lines