

Ball Transfer Unit A7103-13

Ball Units Series A7 - Wheel S/3

-30 °C - +100 °C

- swivels easily
- wear resistant
- shock proof
- floor protective
- weather proof

Wheel

Ball: carbon steel or stainless steel

Units are machined using CNC machines
from one piece of steel

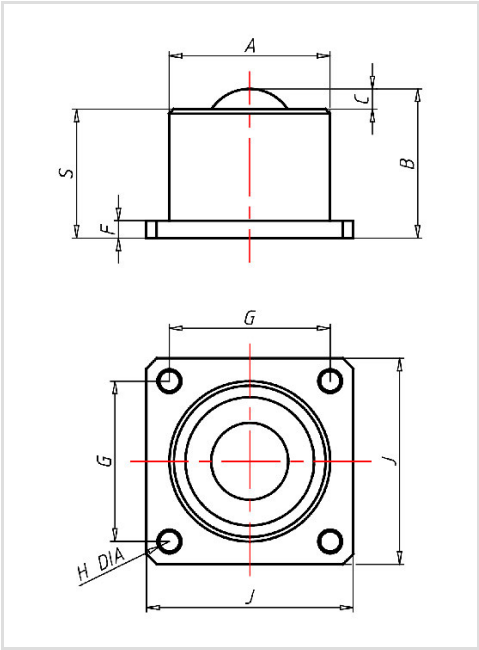
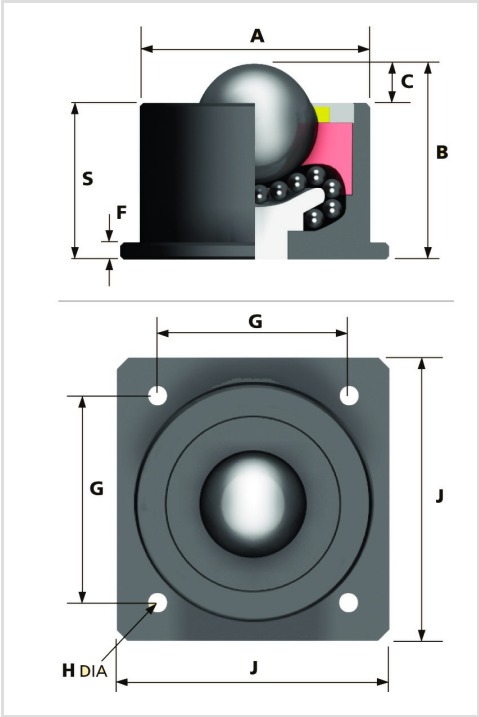
Hevi-Load units run on the re-circulating ball principle
The load ball rotates on a hardened bed of small balls

Ball Transfer Unit	
Series:	3
Ball-Ø mm:	12,7
Finish housing:	steel
Finish Balls:	carbon-steel
Load Capacity kg:	35
Load capacity tested according to EN 12530 and EN 12527	
A mm:	23,8
B mm:	22,6
C mm:	3,5
F mm:	3,2
G mm:	34,8
H mm:	3,6
J mm:	44,5
S mm:	19,1

Advantages

- ✓ Casing made of solid steel on the lathe
- ✓ units run on the re-circulating ball principle
- ✓ The load ball rotates on a hardened bed of small balls
- ✓ plate with four fixing holes

©Copyright 2024 Rollenbau GmbH, www.rollenbau.at 02.06.2024



Applications

- Haulage way
- Assembly lines