


Fixed castor EDF 201 PK

Extra Heavy Duty Series ED - Wheel P

 -30 °C - +80 °C

+++
swivels easily

+++
wear resistant

+++
shock proof

++
floor protective

+++
weather proof

Wheel



Casted high quality nylon wheel

Fork

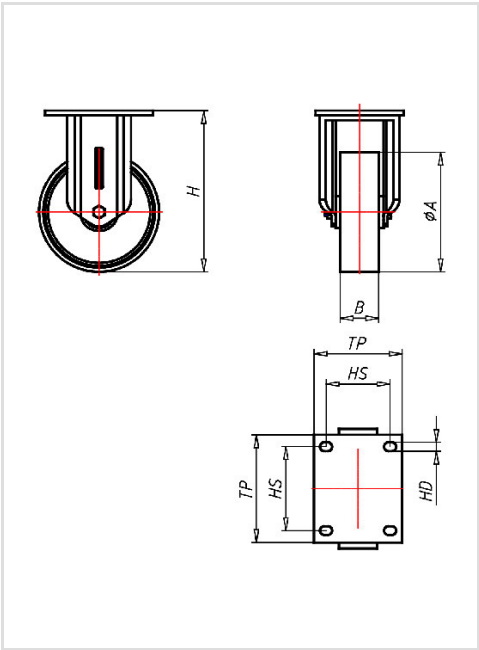


For applications where a super strong and durable caster is required,
one tapered roller and one axial ball bearing,
dust protection ring,
very strong integrated Kingpin,
locked nut, grease nipple, wheel axle bolted,
finish – painted

Fixed castor	Wheel-Ø A x width B mm: 200x50
Load Capacity kg:	1000
Load capacity tested according to EN 12530 and EN 12527	
Overall height H mm:	251
Dimension of top plate TP mm:	135x110
Hole spacing HS mm:	105x80
Hole-Ø HD mm:	13
Wheel bearing:	Ball bearing

Advantages

- ✓ easy running on smooth floors
- ✓ impact proof
- ✓ high abrasion resistance
- ✓ easy to clean
- ✓ high chemical resistance



Applications

- Metal-Technology
- Heavy duty dollies
- Trash container trucks
- Machinery moving dollies
- Workshops
- Racks
- Building-Industry
- Carpentry