

# Swivel castor IN 80 ALBX



Stainless Steel Series IN - Wheel AL

-30 °C - +80 °C

- ++○

swivels easily
- ++○

wear resistant
- ++○

shock proof
- ++○

floor protective
- ++++

weather proof

Wheel

Coated in injected polyurethane, 58±3 Shore D  
High quality nylon wheel centre

Fork

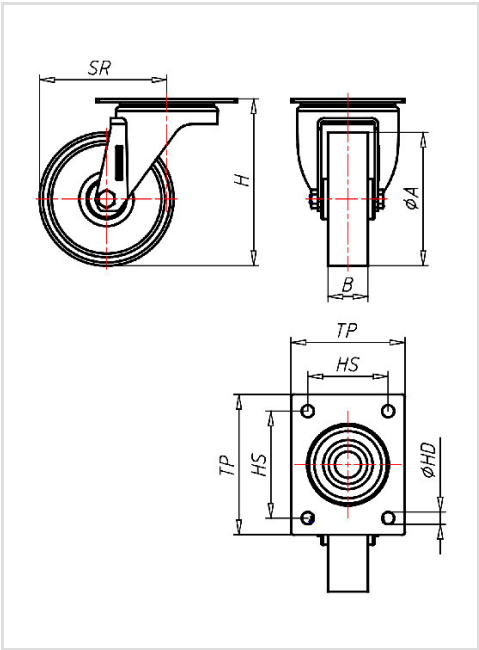
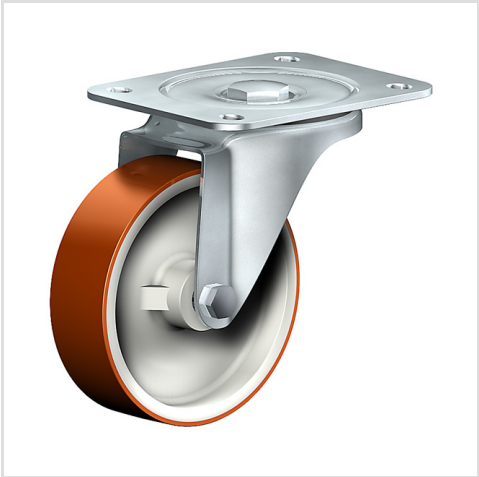


Finish: Polished stainless steel, swivel fork with top plate, double ball bearing – bolted, with dust protection ring, wheel axle bolted – locked, adjustable total lock

Swivel castor	Wheel-Ø A x width B mm: 80x25
Load Capacity kg:	100
Load capacity tested according to EN 12530 and EN 12527	
Overall height H mm:	100
Dimension of top plate TP mm:	105x85
Hole spacing HS mm:	80x60
Hole-Ø HD mm:	9
Swivel radius SR mm:	81
Wheel bearing:	Roller bearing

Advantages

- ✓ low rolling resistance
- ✓ high abrasion and tear resistance
- ✓ easy to clean
- ✓ good chemical resistance



Applications

- Wet environments
- Dollies