

Swivel castor IP 250 RNBX



Stainless Steel Series IP - Wheel RN

-20 °C - +70 °C

+++
swivels easily

+++
wear resistant

+++
shock proof

+++
floor protective

+++
weather proof

Wheel



Elastic solid rubber tyre, blue, 73±5 Shore A, vulcanised on wheel centre

High quality nylon wheel centre, black

Fork



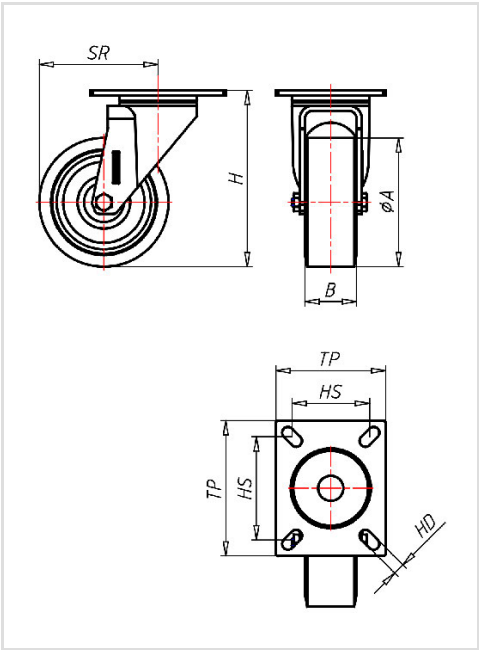
Finish: Polished stainless steel swivel fork AISI 304, stainless steel Kingpin AISI 303 riveted to the top plate, stainless steel balls AISI 420, thermoplastic dust seal (water proof), self-locking stainless steel nut, adjustable total lock

Swivel castor	Wheel-Ø A x width B mm: 250x50
Load Capacity kg:	480
Load capacity tested according to EN 12530 and EN 12527	
Overall height H mm:	303
Dimension of top plate TP mm:	135x110
Hole spacing HS mm:	105x80
Hole-Ø HD mm:	13
Swivel radius SR mm:	196
Wheel bearing:	Roller bearing

Advantages

- ✓ excellent running performance
- ✓ very silent in motion
- ✓ low rolling resistance
- ✓ good abrasion resistance
- ✓ corrosion resistant
- ✓ non-marking

©Copyright 2024 Rollenbau GmbH, www.rollenbau.at 02.06.2024



Applications

- Wet environments
- Dollies