

Fixed castor IPF 200 A



Stainless Steel Series IP - Wheel A

-30 °C - +80 °C

+++
swivels easily

+++
wear resistant

+++
shock proof

+++
floor protective

+++
weather proof

Wheel



Coated in cast polyurethane, 95±3 Shore A

High quality nylon wheel centre

Fork



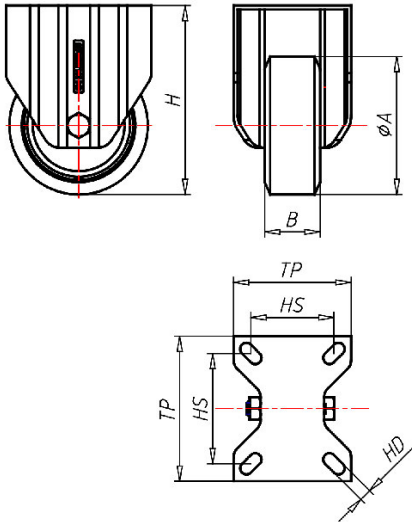
Finish: Polished stainless steel swivel fork AISI 304, stainless steel Kingpin AISI 303 riveted to the top plate, stainless steel balls AISI 420, thermoplastic dust seal (water proof), self-locking stainless steel nut, adjustable total lock

Fixed castor	Wheel-Ø A x width B mm: 200x50
Load Capacity kg:	600
Load capacity tested according to EN 12530 and EN 12527	
Overall height H mm:	248
Dimension of top plate TP mm:	135x110
Hole spacing HS mm:	105x80
Hole-Ø HD mm:	13
Wheel bearing:	Nylon plain bearing

Advantages

- ✓ silent in motion
- ✓ low rolling resistance
- ✓ high abrasion and tear resistance
- ✓ high resistance to shocks
- ✓ easy to clean
- ✓ good chemical resistance

©Copyright 2024 Rollenbau GmbH, www.rollenbau.at 01.06.2024



Applications

- Wet environments
- Dollies