

Fixed castor PDF 200 LZK

Heavy Duty Series PD - Wheel Z

-30 °C - +80 °C

+++
swivels easily

+++
wear resistant

+++
shock proof

+++
floor protective

+++
weather proof

Wheel



Tread: Cast polyurethane, 95±3 Shore A

Wheel centre, Cast-iron - painted

Fork



Finish: electro-zinc plated, hardened steel balls, double ball race – hardened steel sheet, with strong Kingpin bolted and locked – adjustable, thermoplastic dust protection ring and seal, wheel axle bolted, adjustable total lock – leading or trailing available

Fixed castor Wheel-Ø A x width B mm: 200x40

Load Capacity kg: 800

Load capacity tested according to EN 12530 and EN 12527

Overall height H mm: 250

Dimension of top plate TP mm: 135x110

Hole spacing HS mm: 105x80

Hole-Ø HD mm: 12,5

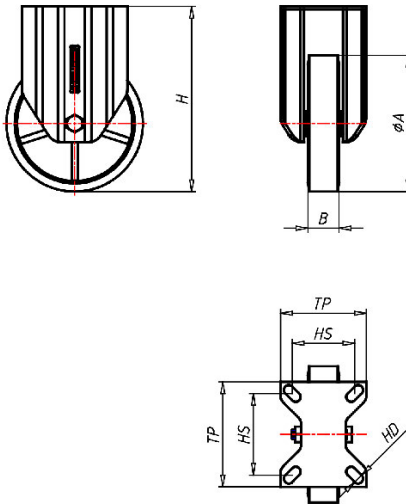
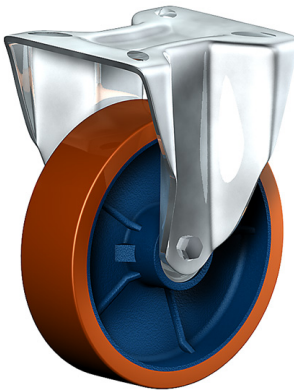
Wheel bearing: Ball bearing

Advantages

- ✓ silent in motion
- ✓ low rolling resistance
- ✓ high abrasion and tear resistance
- ✓ high resistance to shocks
- ✓ good chemical resistance

©Copyright 2024 Rollenbau GmbH, www.rollenbau.at 03.06.2024

ROLLENBAU



Applications

- Metal-Technology
- Heavy duty dollies
- Machinery moving dollies
- Scaffolds
- Workshops
- Racks
- Building-Industry
- Carpentry