

Fixed castor PDF 225 AK

Heavy Duty Series PD - Wheel A

-30 °C - +80 °C

+++
swivels easily

+++
wear resistant

+++
shock proof

+++
floor protective

+++
weather proof

Wheel



Coated in cast polyurethane, 95±3 Shore A

High quality nylon wheel centre

Fork



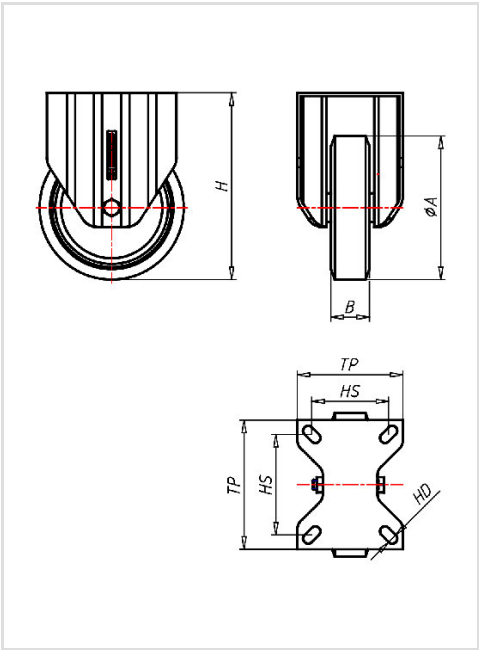
Finish: electro-zinc plated, hardened steel balls, double ball race – hardened steel sheet, with strong Kingpin bolted and locked – adjustable, thermoplastic dust protection ring and seal, wheel axle bolted, adjustable total lock – leading or trailing available

Fixed castor	Wheel-Ø A x width B mm: 225x50
Load Capacity kg:	700
Load capacity tested according to EN 12530 and EN 12527	
Overall height H mm:	293
Dimension of top plate TP mm:	135x110
Hole spacing HS mm:	105x80
Hole-Ø HD mm:	12,5
Wheel bearing:	Ball bearing

Advantages

- ✓ silent in motion
- ✓ low rolling resistance
- ✓ high abrasion and tear resistance
- ✓ high resistance to shocks
- ✓ easy to clean
- ✓ good chemical resistance

©Copyright 2024 Rollenbau GmbH, www.rollenbau.at 03.06.2024



Applications

- Metal-Technology
- Heavy duty dollies
- Machinery moving dollies
- Scaffolds
- Workshops
- Racks
- Building-Industry
- Carpentry