

# Swivel castor PS 151 Q

Heavy Duty Series PD - Wheel Q

-30 °C - +80 °C

++  
swivels easily

+++  
wear resistant

+++  
shock proof

+  
floor protective

++  
weather proof

## Wheel



Casted iron wheel, painted, round machined tread

## Fork



Finish: electro-zinc plated, hardened steel balls, double ball race – hardened steel sheet, with strong Kingpin bolted and locked – adjustable, thermoplastic dust protection ring and seal, wheel axle bolted, adjustable total lock – leading or trailing available

Swivel castor      Wheel-Ø A x width B mm: 150x55

Load Capacity kg:      750

Load capacity tested according to EN 12530 and EN 12527

Overall height H mm:      203

Dimension of top plate TP mm:      135x110

Hole spacing HS mm:      105x80

Hole-Ø HD mm:      12,5

Swivel radius SR mm:      141

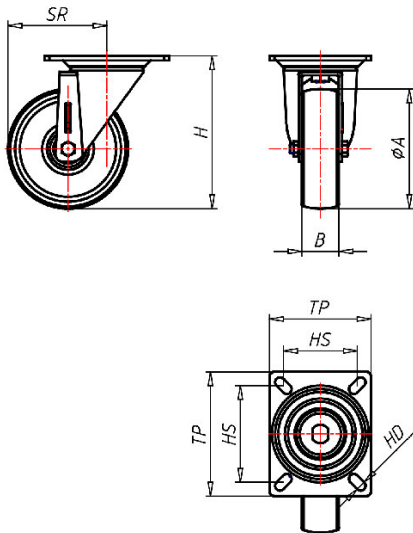
Wheel bearing:      Plain bearing

## Advantages

- ✓ easy running on smooth floors
- ✓ very high load capacity
- ✓ excellent abrasion resistance
- ✓ with plain or ball bearing for high temperatures

©Copyright 2024 Rollenbau GmbH, www.rollenbau.at 03.06.2024

ROLLENBAU



## Applications

- Heavy duty dollies
- Machinery moving dollies
- Scaffolds
- Racks