

Swivel castor with total lock QXT 126



STAINLESS STEEL
Stainless Steel Series QX - Wheel P

-30 °C - +80 °C

- +++
swivels easily

+++
wear resistant

+++
shock proof

++
floor protective

+++
weather proof

Wheel



Casted high quality nylon wheel

Fork



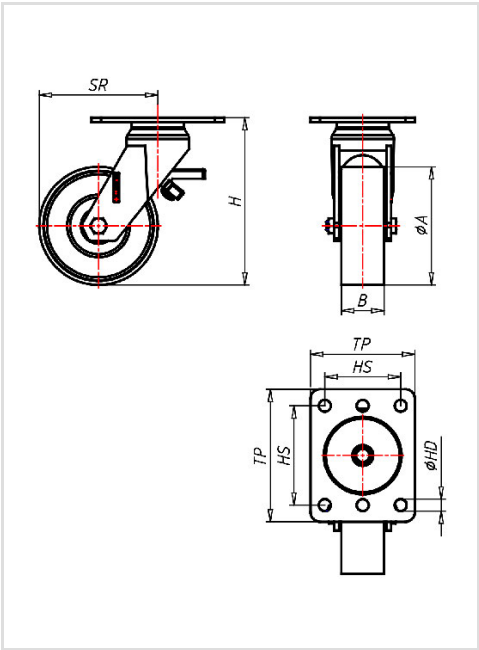
Finish: Polished stainless steel, swivel fork AISI 304, double ball bearing, very strong integrated Kingpin, wheel axle bolted, adjustable total lock

Swivel castor with total lockWheel-Ø A x width B mm: 125x45	
Load Capacity kg:	700
Load capacity tested according to EN 12530 and EN 12527	
Overall height H mm:	177
Dimension of top plate TP	140x110
mm:	
Hole spacing HS mm:	105x80
Hole-Ø HD mm:	12,5
Swivel radius SR mm:	125
Wheel bearing:	Nylon plain bearing

Advantages

- ✓ easy running on smooth floors
- ✓ impact proof
- ✓ high abrasion resistance
- ✓ easy to clean
- ✓ high chemical resistance

©Copyright 2024 Rollenbau GmbH, www.rollenbau.at 01.06.2024



Applications

- Wet environments
- Meat processing vats