

# Swivel castor with total lock XDT 150



Stainless Steel Series XD - Wheel PS

-30 °C - +80 °C

+++  
swivels easily

+++  
wear resistant

++  
shock proof

+++  
floor protective

+++  
weather proof

## Wheel



Cast soft polyurethane coating, 87±3 Shore A

High quality nylon wheel centre

## Fork



Finish: Polished stainless steel swivel fork AISI 304, stainless steel balls AISI 420, double ball bearing – revited, with dust protection ring, wheel axle bolted, total lock

Swivel castor with total lock Wheel-Ø A x width B mm: 150x40

Load Capacity kg: 250

Load capacity tested according to EN 12530 and EN 12527

Overall height H mm: 181

Dimension of top plate TP 135x110 mm:

Hole spacing HS mm: 105x80

Hole-Ø HD mm: 11

Swivel radius SR mm: 140

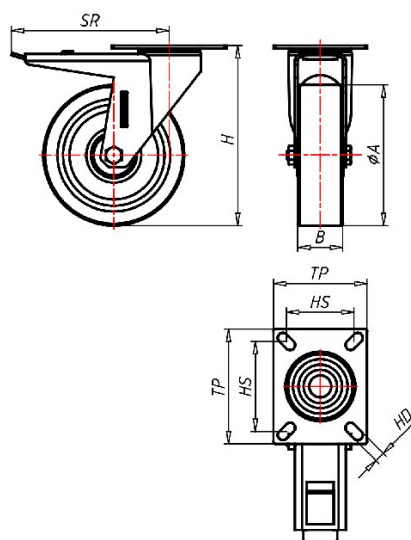
Wheel bearing: Roller bearing

## Advantages

- ✓ very silent in motion
- ✓ low rolling resistance
- ✓ high abrasion and tear resistance
- ✓ high resistance to shocks
- ✓ easy to clean
- ✓ good chemical resistance

©Copyright 2024 Rollenbau GmbH, www.rollenbau.at 01.06.2024

ROLLENBAU



## Applications

- Kitchen equipment
- Mechatronik
- Wet environments
- Dollies