

# Swivel castor XS 125 AL



Stainless Steel Series XD - Wheel AL

-30 °C - +80 °C

swivels easily

wear resistant

shock proof

floor protective

weather proof

## Wheel

Coated in injected polyurethane, 58±3 Shore D

High quality nylon wheel centre

## Fork



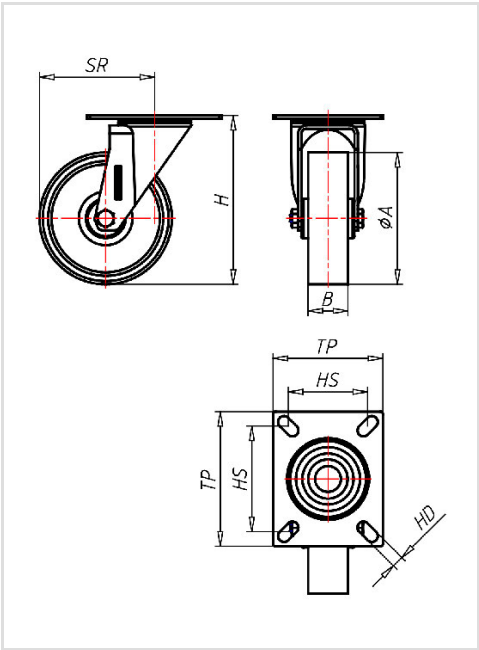
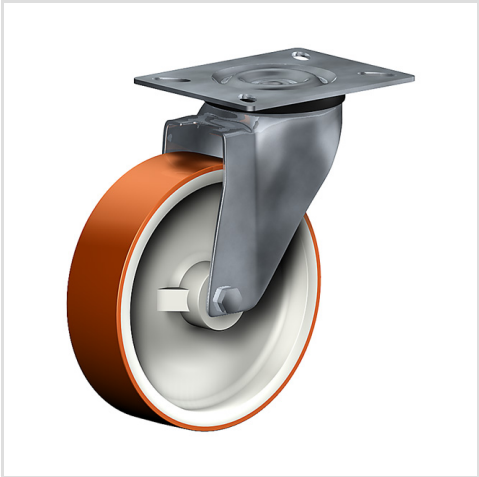
Finish: Polished stainless steel swivel fork AISI 304, stainless steel balls AISI 420, double ball bearing – revited, with dust protection ring, wheel axle bolted, total lock

Swivel castor	Wheel-Ø A x width B mm: 125x30
Load Capacity kg:	230
Load capacity tested according to EN 12530 and EN 12527	
Overall height H mm:	160
Dimension of top plate TP mm:	102x83
Hole spacing HS mm:	80x60
Hole-Ø HD mm:	9
Swivel radius SR mm:	113
Wheel bearing:	Nylon plain bearing

## Advantages

- ✓ low rolling resistance
- ✓ high abrasion and tear resistance
- ✓ easy to clean
- ✓ good chemical resistance

©Copyright 2024 Rollenbau GmbH, www.rollenbau.at 01.06.2024



## Applications

- Kitchen equipment
- Mechatronik
- Wet environments
- Dollies