


Transport Series 2SL, Wheel VKRK



 max 200 kg  -20 °C - +80 °C  50-50 mm

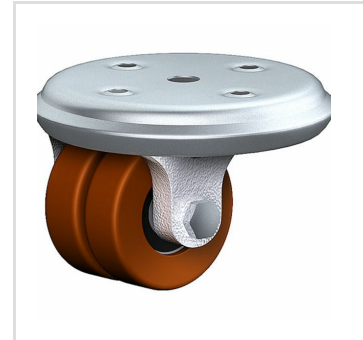
+++
swivels easily

+++
wear resistant

+++
shock proof

+++
floor protective

+++
weather proof



Material



Vulkollan® 92° Shore, vulcanised on core
steel core, precision ball bearing

Material Fork



Twin wheel castor steel zinc coated
and grey cast iron, ball bearing


Advantages

- ✓ high load capacity with small overall height
- ✓ easy running due to a large swivel bearing
- ✓ maximum service life
- ✓ no deformation during dynamic loads
- ✓ minimum rolling resistance
- ✓ outstanding resistance against oils, petrol, benzene and the majority of acids
- ✓ with Stabaxol high hydrolysis reliability
- ✓ high groove resistance
- ✓ no deformation during stationary loads
- ✓ excellent temperature stability

Applications

- Metal-Technology
- Workshops
- Carpentry
- Building-Industry

Dimensions

ARTICLE NUMBER	ARTICEL TYPE	WHEEL-Ø A X WIDTH B MM	LOAD CAPACITY KG	OVERALL HEIGHT H MM	DIMENSION OF TOP PLATE TP MM	HOLE SPACING HS MM	HOLE-Ø HD MM	SWIVEL RADIUS SR MM	WHEEL BEARING	PRICE €
2SL 50 VKRK	Swivel castor	50x15+15	200	64	95	36x36	6,8	52		145,32