

Swivel castor with wheel brake 531 M12 75 P

Furniture Castors Series 530 GW - Wheel P

-20 °C - +60 °C

+++
swivels easily

+++
wear resistant

+++
shock proof

+++
floor protective

+++
weather proof

Wheel

Casted high quality nylon wheel black

High quality nylon housing - black

Swivel bearing with combined

plain-ball bearing

Wheel brake - glass fibre reinforced

Wheel axle revited

Swivel castor with wheel brake Wheel-Ø A x width B mm: 75x13+13

Load Capacity kg: 60

Load capacity tested according to EN 12530 and EN 12527

Overall height H mm: 93

Threat mm: M12x15

Swivel radius SR mm: 88

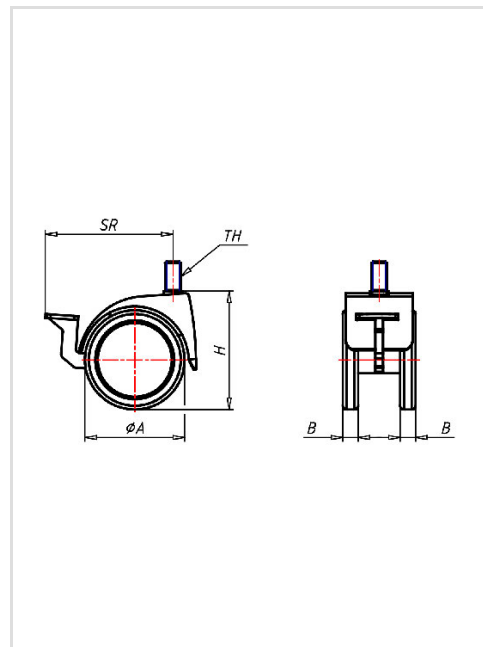
Wheel bearing: Nylon plain bearing

Advantages

- ✓ easy running on smooth floors
- ✓ impact proof
- ✓ high abrasion resistance
- ✓ easy to clean
- ✓ high chemical resistance

©Copyright 2024 Rollenbau GmbH, www.rollenbau.at 03.06.2024

ROLLENBAU



Applications

- Health-Professionals