

# Swivel castor with wheel brake 541

## M12 100 PUEL

Furniture Castors Series 540 GW - Wheel PUEL

-20 °C - +60 °C

+++  
swivels easily

+++  
wear resistant

+++  
shock proof

+++  
floor protective

+++  
weather proof

### Wheel

coated in polyurethane, 90±3 Shore Aelectrically conductive  
<10<sup>4</sup>Ω

High quality nylon wheel centre

Zinc-die-cast housing - chrome plated

Swivel bearing with combined  
plain-ball bearing

Wheel brake - glass fibre reinforced

Wheel axle revited

Swivel castor with wheel brake Wheel-Ø A x width B mm: 100x13+13

Load Capacity kg: 70

Load capacity tested according to EN 12530 and EN 12527

Overall height H mm: 124

Threat mm: M12x15

Swivel radius SR mm: 116

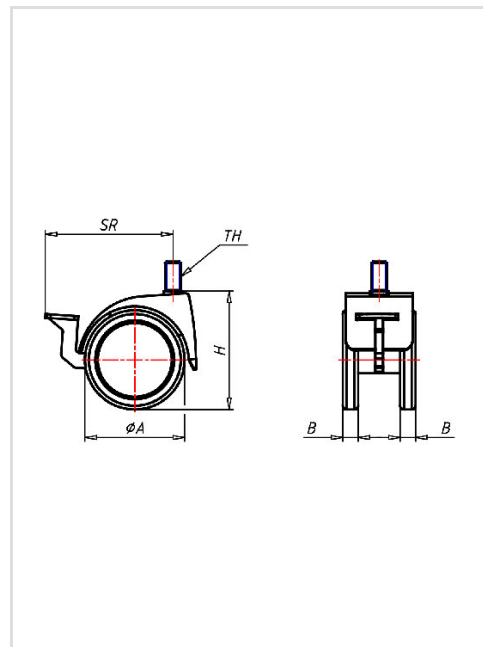
Wheel bearing: Nylon plain bearing

### Advantages

- ✓ electrically conductive
- ✓ silent in motion
- ✓ low rolling resistance
- ✓ non-marking
- ✓ high resistance to shocks
- ✓ good chemical resistance

©Copyright 2024 Rollenbau GmbH, www.rollenbau.at 20.05.2024

ROLLENBAU



### Applications

- Health-Professionals