

# Swivel castor with wheel brake 541

## 10x34 50 PEL

Furniture Castors Series 540 ST - Wheel PEL

-20 °C - +60 °C

+++  
swivels easily

+++  
wear resistant

+++  
shock proof

+++  
floor protective

+++  
weather proof

### Wheel

Casted high quality nylon wheel, blackelectrically conductive  
<10<sup>4</sup>Ω

Zinc-die-cast housing - chrome plated  
Swivel bearing with combined  
plain-ball bearing  
Wheel brake - glass fibre reinforced  
Wheel axle revited

Swivel castor with wheel brake Wheel-Ø A x width B mm: 52x8+8

Load Capacity kg: 40

Load capacity tested according to EN 12530 and EN 12527

Overall height H mm: 62

Stern mm: 10x34

Swivel radius SR mm: 69

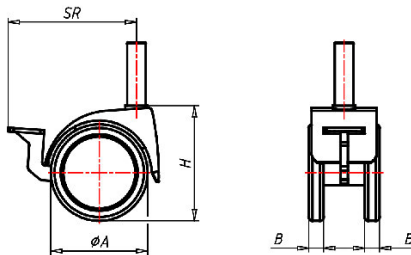
Wheel bearing: Nylon plain bearing

### Advantages

- ✓ electrically conductive
- ✓ easy running on smooth floors
- ✓ impact proof
- ✓ high abrasion resistance
- ✓ easy to clean
- ✓ high chemical resistance

©Copyright 2024 Rollenbau GmbH, www.rollenbau.at 20.05.2024

ROLLENBAU



### Applications

- Health-Professionals