

# Fixed castor 88-100 CIB

Heavy Duty Series 61 - Wheel CI

-30 °C - +80 °C

++  
swivels easily

+++  
wear resistant

+++  
shock proof

+  
floor protective

++  
weather proof

## Wheel



Casted iron wheel, painted, round machined tread, Wheel-Ø 50 and 63 made of Zamac

## Fork



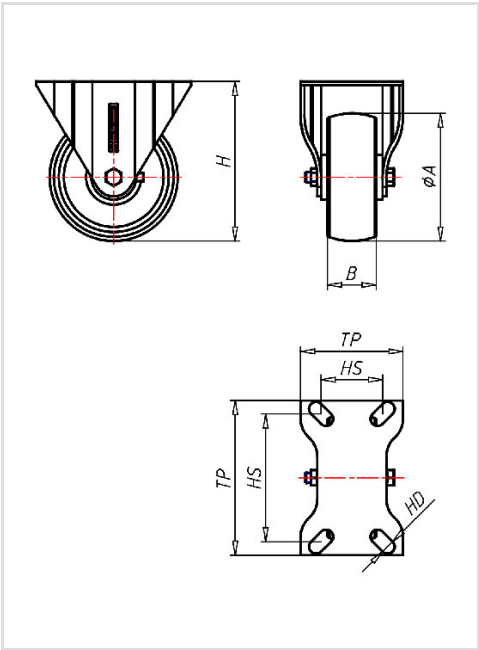
Large swivel bearing – for a long service life, zinc plated, specially formed forklegs – high load capacity, wheel axle bolted – locked, wheel brake

Fixed castor	Wheel-Ø A x width B mm: 100x38
Load Capacity kg:	340
Load capacity tested according to EN 12530 and EN 12527	
Overall height H mm:	125
Dimension of top plate TP mm:	122x77
Hole spacing HS mm:	100x48
Hole-Ø HD mm:	11
Wheel bearing:	Roller bearing

## Advantages

- ✓ easy running on smooth floors
- ✓ very high load capacity
- ✓ excellent abrasion resistance
- ✓ with plain or ball bearing for high temperatures

©Copyright 2024 Rollenbau GmbH, www.rollenbau.at 02.06.2024



## Applications

- Heavy duty dollies
- Dough troughs
- Machinery moving dollies
- Scaffolds