

Fixed castor 88-100 RNB

Heavy Duty Series 61 - Wheel RN

-20 °C - +70 °C

+++
swivels easily

+++
wear resistant

+++
shock proof

+++
floor protective

+++
weather proof

Wheel



Elastic solid rubber tyre, blue, 73±5 Shore A, vulcanised on wheel centre

High quality nylon wheel centre, black

Fork



Large swivel bearing – for a long service life, zinc plated, specially formed forklegs – high load capacity, wheel axle bolted – locked, wheel brake

Fixed castor Wheel-Ø A x width B mm: 100x38

Load Capacity kg: 160

Load capacity tested according to EN 12530 and EN 12527

Overall height H mm: 125

Dimension of top plate TP
mm:

Hole spacing HS mm: 100x48

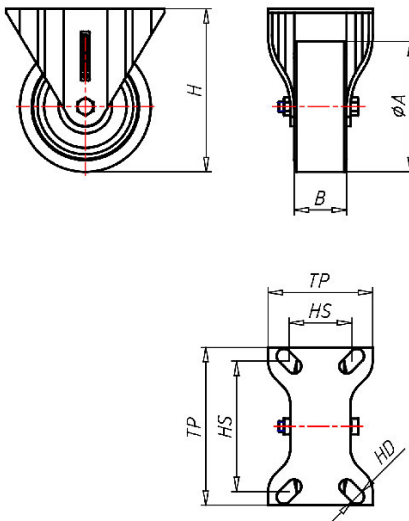
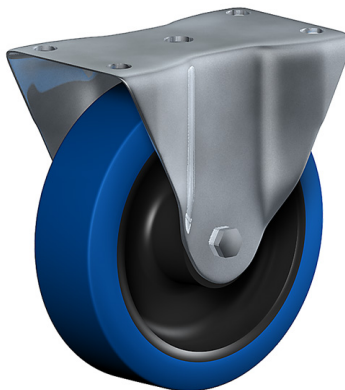
Hole-Ø HD mm: 11

Wheel bearing: Roller bearing

Advantages

- ✓ excellent running performance
- ✓ very silent in motion
- ✓ low rolling resistance
- ✓ good abrasion resistance
- ✓ corrosion resistant
- ✓ non-marking

©Copyright 2024 Rollenbau GmbH, www.rollenbau.at 02.06.2024



Applications

- Heavy duty dollies
- Dough troughs
- Machinery moving dollies
- Scaffolds