

# Fixed castor 88-126 ZK

Heavy Duty Series 61 - Wheel Z

-30 °C - +80 °C

++●

swivels easily

+++

wear resistant

+++

shock proof

++●

floor protective

++●

weather proof

Wheel



Tread: Cast polyurethane, 95±3 Shore A

Wheel centre, Cast-iron - painted

Fork



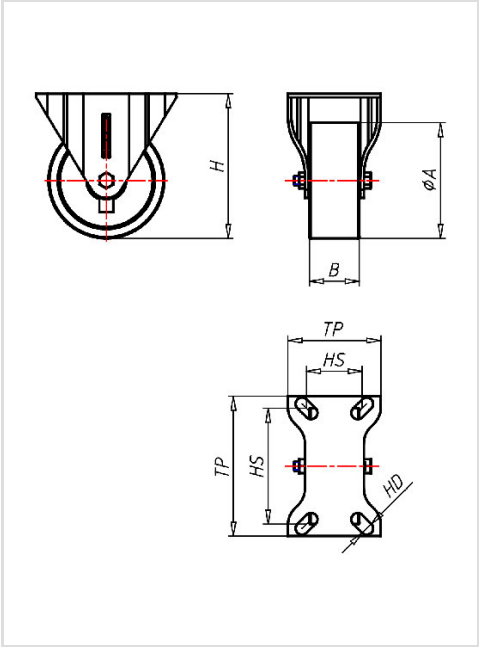
Large swivel bearing – for a long service life, zinc plated, specially formed forklegs – high load capacity, wheel axle bolted – locked, wheel brake

Fixed castor	Wheel-Ø A x width B mm: 125x40
Load Capacity kg:	400
Load capacity tested according to EN 12530 and EN 12527	
Overall height H mm:	156
Dimension of top plate TP mm:	122x77
Hole spacing HS mm:	100x48
Hole-Ø HD mm:	11
Wheel bearing:	Ball bearing

Advantages

- ✓ silent in motion
- ✓ low rolling resistance
- ✓ high abrasion and tear resistance
- ✓ high resistance to shocks
- ✓ good chemical resistance

©Copyright 2024 Rollenbau GmbH, www.rollenbau.at 02.06.2024



Applications

- Heavy duty dollies
- Machinery moving dollies
- Scaffolds