


# Wheel 100 EB 15

Forklift wheels Series E

 -20 °C - +70 °C

  
swivels easily

  
wear resistant

  
shock proof

  
floor protective

  
weather proof

## Wheel

Tread: Elastic solid rubber tyre, black, 73±5 Shore A, vulcanised on wheel centre

Wheel centre: Die-cast aluminium alloy

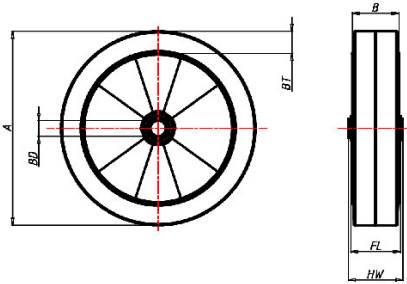
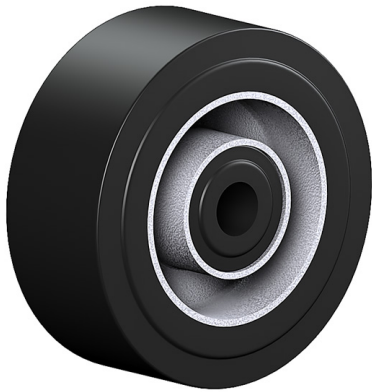
|   |                                |
|---|--------------------------------|
| Wheel   | Wheel-Ø A x width B mm: 100x40 |
| Load Capacity kg:                                       | 150                            |
| Load capacity tested according to EN 12530 and EN 12527 |                                |
| Band thickness mm:                                      | 28,5                           |
| Hub width mm:   | 40                             |
| Fixing length mm:                                       | 40                             |
| Wheel bearing:  | Roller bearing                 |
| Bore diameter mm:                                       | 15                             |

## Advantages

- ✓ excellent running performance
- ✓ very silent in motion
- ✓ low rolling resistance
- ✓ good abrasion resistance
- ✓ corrosion resistant
- ✓ non-marking in grey

©Copyright 2024 Rollenbau GmbH, [www.rollenbau.at](http://www.rollenbau.at) 02.06.2024

 ROLLENBAU



## Applications

- Bins
- Refuse bins
- Trash containers
- Refuse containers