

# Swivel castor IN 100 DG



Stainless Steel Series IN - Wheel DG

-20 °C - +60 °C

+++  
swivels easily

+++  
wear resistant

+++  
shock proof

+++  
floor protective

+++  
weather proof

## Wheel



Elastic solid rubber tyre, grey, 75±5 Shore A

Quality nylon wheel centre, black

## Fork



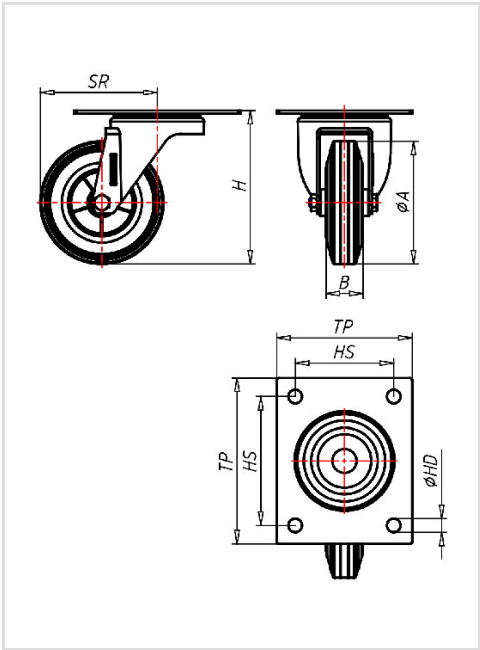
Finish: Polished stainless steel, swivel fork with top plate, double ball bearing – bolted, with dust protection ring, wheel axle bolted – locked, adjustable total lock

Swivel castor	Wheel-Ø A x width B mm: 100x30
Load Capacity kg:	85
Load capacity tested according to EN 12530 and EN 12527	
Overall height H mm:	125
Dimension of top plate TP	135x110
mm:	
Hole spacing HS mm:	105x80
Hole-Ø HD mm:	11
Swivel radius SR mm:	101
Wheel bearing:	Nylon plain bearing

## Advantages

- ✓ non-marking – floor protective
- ✓ excellent running performance
- ✓ very silent in motion
- ✓ low rolling resistance
- ✓ good abrasion resistance

©Copyright 2024 Rollenbau GmbH, www.rollenbau.at 02.06.2024



## Applications

- Wet environments
- Dollies