

# Swivel castor with total lock INT 160



Stainless Steel Series IN - Wheel DG

-20 °C - +60 °C

+++  
swivels easily

+++  
wear resistant

++  
shock proof

+++  
floor protective

+++  
weather proof

### Wheel



Elastic solid rubber tyre, grey, 75±5 Shore A

Quality nylon wheel centre, black

### Fork



Finish: Polished stainless steel, swivel fork with top plate, double ball bearing – bolted, with dust protection ring, wheel axle bolted – locked, adjustable total lock

Swivel castor with total lock Wheel-Ø A x width B mm: 160x40

Load Capacity kg: 160

Load capacity tested according to EN 12530 and EN 12527

Overall height H mm: 185

Dimension of top plate TP 135x110 mm:

Hole spacing HS mm: 105x80

Hole-Ø HD mm: 11

Swivel radius SR mm: 150

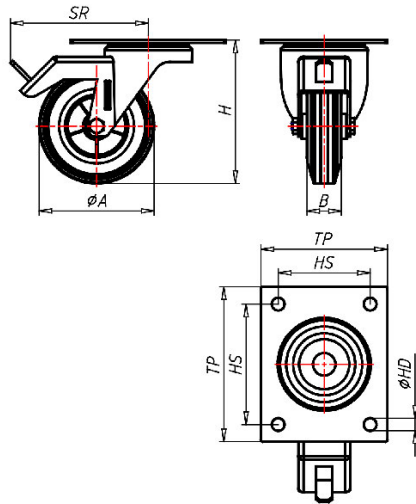
Wheel bearing: Nylon plain bearing

### Advantages

- ✓ non-marking – floor protective
- ✓ excellent running performance
- ✓ very silent in motion
- ✓ low rolling resistance
- ✓ good abrasion resistance

©Copyright 2024 Rollenbau GmbH, www.rollenbau.at 02.06.2024

ROLLENBAU



### Applications

- Wet environments
- Dollies