

# Fixed castor IPSF 125 P



Stainless Steel Series IP - Wheel P

-30 °C - +80 °C

+++  
swivels easily

+++  
wear resistant

+++  
shock proof

+++  
floor protective

+++  
weather proof

## Wheel



Casted high quality nylon wheel

## Fork



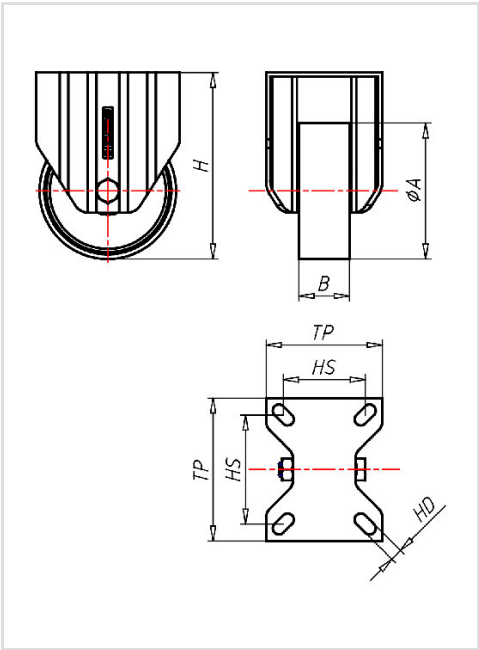
Finish: Polished stainless steel swivel fork AISI 304, stainless steel Kingpin AISI 303 riveted to the top plate, stainless steel balls AISI 420, thermoplastic dust seal (water proof), self-locking stainless steel nut, adjustable total lock

Fixed castor	Wheel-Ø A x width B mm: 125x45
Load Capacity kg:	450
Load capacity tested according to EN 12530 and EN 12527	
Overall height H mm:	162
Dimension of top plate TP mm:	135x110
Hole spacing HS mm:	105x80
Hole-Ø HD mm:	11
Wheel bearing:	Nylon plain bearing

## Advantages

- ✓ easy running on smooth floors
- ✓ impact proof
- ✓ high abrasion resistance
- ✓ easy to clean
- ✓ high chemical resistance

©Copyright 2024 Rollenbau GmbH, www.rollenbau.at 01.06.2024



## Applications

- Mechatronik
- Wet environments
- Dollies