



Swivel castor KS 150 TLSBAK

Transport Series KD - Wheel TLSBA

 -20 °C - +80 °C


 swivels easily


 wear resistant


 shock proof


 floor protective


 weather proof

Wheel



Tread: cast polyurethane, 85 ± 2 Shore A crowned - soft

Core: Die-cast aluminium alloy

Fork



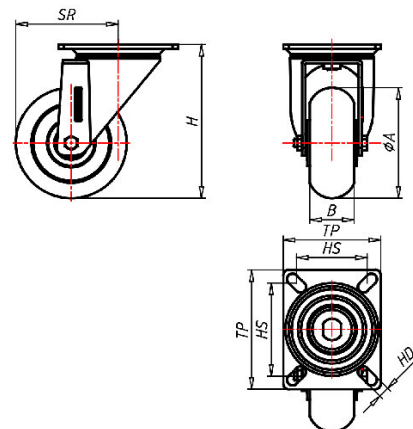
Finish: electro-zinc plated, hardened steel balls, double ball race swivel head – pressed steel sheet, with strong Kingpin bolted and locked – adjustable, thermoplastic dust protection ring and seal, wheel axle bolted, adjustable total lock – leading or trailing available

Swivel castor	Wheel-Ø A x width B mm: 150x50
Load Capacity kg:	450
Load capacity tested according to EN 12530 and EN 12527	
Overall height H mm:	207
Dimension of top plate TP mm:	135x110
Hole spacing HS mm:	105x80
Hole-Ø HD mm:	12,5
Swivel radius SR mm:	140
Wheel bearing:	Ball bearing

Advantages

- ✓ crowned soft tread makes it very economic
- ✓ very silent in motion
- ✓ very low rolling resistance
- ✓ very revving
- ✓ high abrasion and tear resistance
- ✓ good chemical resistance

©Copyright 2024 Rollenbau GmbH, www.rollenbau.at 02.06.2024

 ROLLENBAU


Applications

- Metal-Technology
- Trash container trucks
- Workshops
- Dye trucks
- Dollies
- Carpentry
- Building-Industry