

Fixed castor KSF 126 TLB

Transport Series KD - Wheel TL



-30 °C - +80 °C

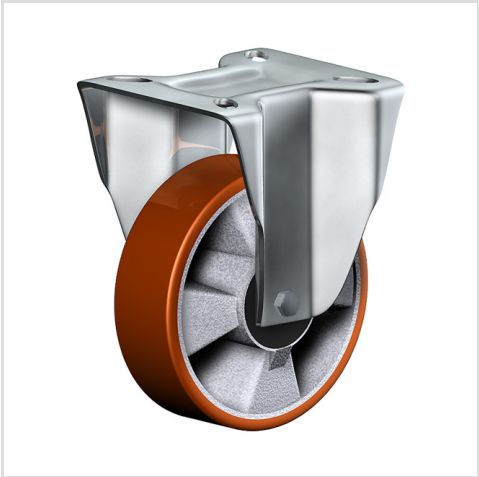
+++
swivels easily

+++
wear resistant

+++
shock proof

+++
floor protective

+++
weather proof



Wheel



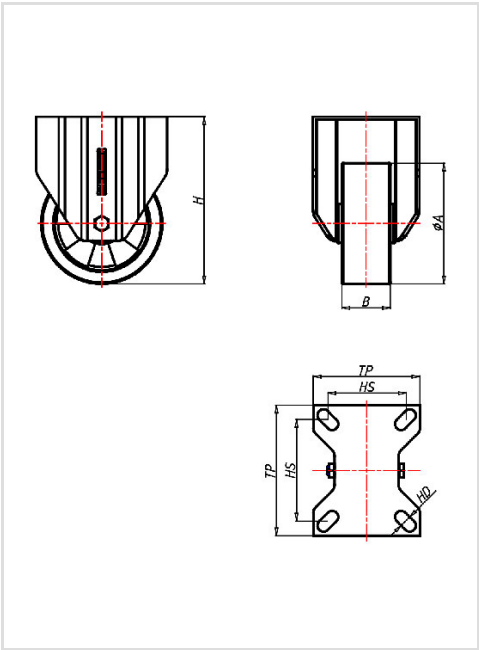
Tread: cast polyurethane, 95±3 Shore A

Core: De-cast aluminium alloy

Fork



Finish: electro-zinc plated, hardened steel balls, double ball race swivel head – pressed steel sheet, with strong Kingpin bolted and locked – adjustable, thermoplastic dust protection ring and seal, wheel axle bolted, adjustable total lock – leading or trailing available



Fixed castor	Wheel-Ø A x width B mm: 125x50
Load Capacity kg:	300
Load capacity tested according to EN 12530 and EN 12527	
Overall height H mm:	173
Dimension of top plate TP mm:	135x110
Hole spacing HS mm:	105x80
Hole-Ø HD mm:	12,5
Wheel bearing:	Roller bearing

Advantages

- ✓ silent in motion
- ✓ low rolling resistance
- ✓ high abrasion and tear resistance
- ✓ high resistance to shocks
- ✓ good chemical resistance

Applications

- Metal-Technology
- Trash container trucks
- Workshops
- Dye trucks
- Dollies
- Carpentry
- Building-Industry