

Swivel castor PD 80 Q

Heavy Duty Series PD - Wheel Q

-30 °C - +80 °C

+++
swivels easily

+++
wear resistant

+++
shock proof

+
floor protective

++
weather proof

Wheel



Casted iron wheel, painted, round machined tread

Fork



Finish: electro-zinc plated, hardened steel balls, double ball race – hardened steel sheet, with strong Kingpin bolted and locked – adjustable, thermoplastic dust protection ring and seal, wheel axle bolted, adjustable total lock – leading or trailing available

Swivel castor Wheel-Ø A x width B mm: 80x30

Load Capacity kg: 250

Load capacity tested according to EN 12530 and EN 12527

Overall height H mm: 128

Dimension of top plate TP mm: 105x85

Hole spacing HS mm: 80x60

Hole-Ø HD mm: 8,5

Swivel radius SR mm: 83

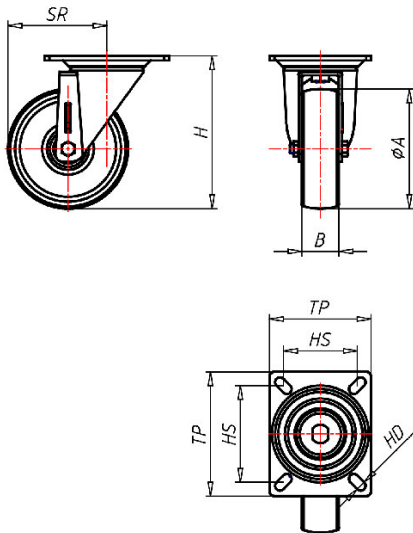
Wheel bearing: Plain bearing

Advantages

- ✓ easy running on smooth floors
- ✓ very high load capacity
- ✓ excellent abrasion resistance
- ✓ with plain or ball bearing for high temperatures

©Copyright 2024 Rollenbau GmbH, www.rollenbau.at 02.06.2024

ROLLENBAU



Applications

- Heavy duty dollies
- Machinery moving dollies
- Scaffolds
- Racks