

# Fixed castor PDF 130 Q

Heavy Duty Series PD - Wheel Q

-30 °C - +80 °C

+++  
swivels easily

+++  
wear resistant

+++  
shock proof

++  
floor protective

+++  
weather proof

## Wheel



Casted iron wheel, painted, round machined tread

## Fork



Finish: electro-zinc plated, hardened steel balls, double ball race – hardened steel sheet, with strong Kingpin bolted and locked – adjustable, thermoplastic dust protection ring and seal, wheel axle bolted, adjustable total lock – leading or trailing available

Fixed castor Wheel-Ø A x width B mm: 130x40

Load Capacity kg: 450

Load capacity tested according to EN 12530 and EN 12527

Overall height H mm: 166

Dimension of top plate TP mm: 135x110

Hole spacing HS mm: 105x80

Hole-Ø HD mm: 10,5

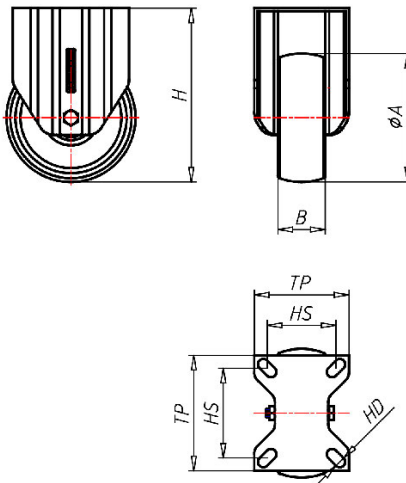
Wheel bearing: Plain bearing

## Advantages

- ✓ easy running on smooth floors
- ✓ very high load capacity
- ✓ excellent abrasion resistance
- ✓ with plain or ball bearing for high temperatures

©Copyright 2024 Rollenbau GmbH, www.rollenbau.at 02.06.2024

ROLLENBAU



## Applications

- Heavy duty dollies
- Machinery moving dollies
- Scaffolds
- Racks