

# Swivel castor QX 200 PEK



Stainless Steel Series QX - Wheel PE

-30 °C - +80 °C

+++  
swivels easily

+++  
wear resistant

+++  
shock proof

++  
floor protective

+++  
weather proof

## Wheel



Casted high quality nylon wheel

## Fork



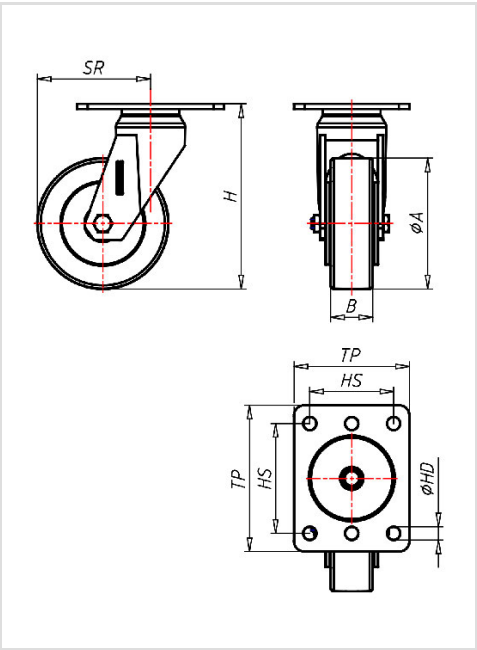
Finish: Polished stainless steel, swivel fork AISI 304, double ball bearing, very strong integrated Kingpin, wheel axle bolted, adjustable total lock

Swivel castor	Wheel-Ø A x width B mm: 200x55
Load Capacity kg:	1300
Load capacity tested according to EN 12530 and EN 12527	
Overall height H mm:	250
Dimension of top plate TP mm:	140x110
Hole spacing HS mm:	105x80
Hole-Ø HD mm:	12,5
Swivel radius SR mm:	160
Wheel bearing:	Ball bearing

## Advantages

- ✓ for extra heavy loads
- ✓ easy running on smooth floors
- ✓ impact proof
- ✓ high abrasion resistance
- ✓ easy to clean
- ✓ high chemical resistance

©Copyright 2024 Rollenbau GmbH, www.rollenbau.at 01.06.2024



## Applications

- Wet environments