

Rail Wheel 200 SP-30

Rail wheels Series SP

-40 °C - +300 °C*

+++
swivels easily

+++
wear resistant

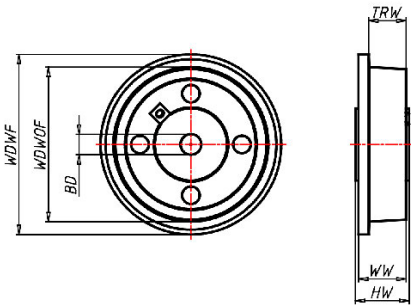
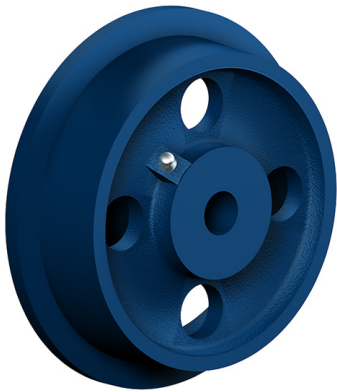
+++
shock proof

+++
floor protective

+++
weather proof

Wheel

Cast-iron single-flanged wheeltread properly machined, 3° tread anglefinish: painted



Rail Wheel

Wheel-Ø without flange mm:200

Wheel-Ø with flange mm: 230

Tread width mm: 38

Wheel width mm: 56

Load Capacity kg: 1500

Load capacity tested according to EN 12530 and EN 12527

Hub width mm: 60

Wheel bearing: Plain bearing

Bore diameter mm: 30

Advantages

- ✓ very high load capacity
- ✓ excellent abrasion resistance
- ✓ for high temperatures

©Copyright 2024 Rollenbau GmbH, www.rollenbau.at 02.06.2024

Applications

- Building-Industry