

# Fixed castor EDF 200 Q

Extra Heavy Duty Series ED - Wheel Q

Temp. -30 °C - +80 °C

+++  
swivels easily

+++  
wear resistant

+++  
shock proof

+  
floor protective

+++  
weather proof

## Wheel



Casted iron wheel, painted, round machined tread

## Fork



For applications where a super strong and durable caster is required,  
one tapered roller and one axial ball bearing,  
dust protection ring,  
very strong integrated Kingpin,  
locked nut, grease nipple, wheel axle bolted,  
finish – painted

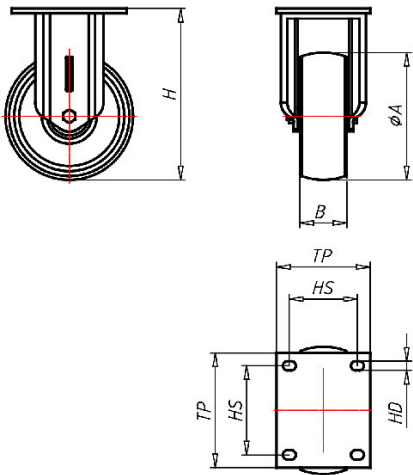
Fixed castor	Wheel-Ø A x width B mm: 200x50
Load Capacity kg:	1000
Load capacity tested according to EN 12530 and EN 12527	
Overall height H mm:	251
Dimension of top plate TP mm:	135x110
Hole spacing HS mm:	105x80
Hole-Ø HD mm:	13
Wheel bearing:	Plain bearing

## Advantages

- ✓ easy running on smooth floors
- ✓ very high load capacity
- ✓ excellent abrasion resistance
- ✓ with plain or ball bearing for high temperatures

©Copyright 2024 Rollenbau GmbH, www.rollenbau.at 27.07.2024

ROLLENBAU



## Applications

- Heavy duty dollies
- Trash container trucks
- Machinery moving dollies
- Racks