


# Fixed castor EDDF 251 PPEK

Extra Heavy Duty Series EDD - Wheel PE

 -30 °C - +80 °C

 **swivels easily**

 **wear resistant**

 **shock proof**

 **floor protective**

 **weather proof**

## Wheel



Casted high quality nylon wheel







## Fork

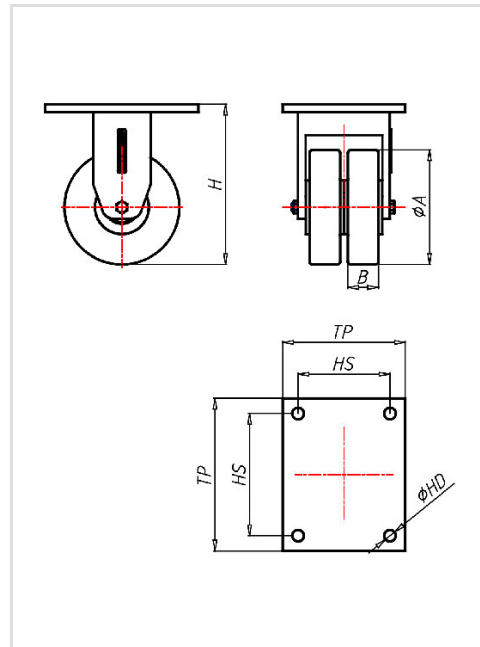
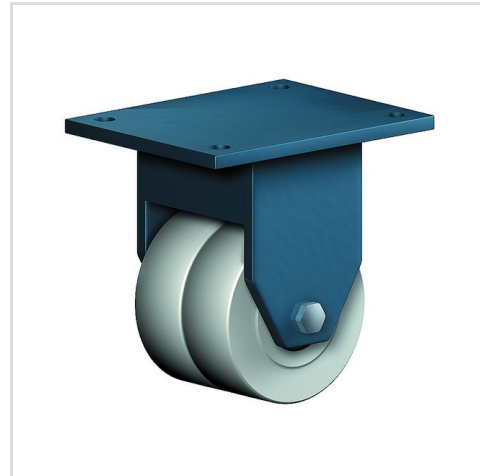


For applications where a super strong and durable caster is required,  
 one tapered roller and one axial ball bearing,  
 dust protection ring,  
 very strong integrated Kingpin,  
 locked nut, grease nipple, wheel axle bolted,  
 finish – painted

Fixed castor	Wheel-Ø A x width B mm: 250x100+100
Load Capacity kg:	3500
Load capacity tested according to EN 12530 and EN 12527	
Overall height H mm:	356
Dimension of top plate TP mm:	255x205
Hole spacing HS mm:	210x160
Hole-Ø HD mm:	17
Wheel bearing:	Ball bearing

## Advantages

-  for extra heavy loads
-  easy running on smooth floors
-  impact proof
-  high abrasion resistance
-  easy to clean
-  high chemical resistance



## Applications

- Metal-Technology
- Heavy duty dollies
- Trash container trucks
- Machinery moving dollies
- Workshops
- Racks
- Building-Industry