


# Swivel castor EDD 150 PPEK

Extra Heavy Duty Series EDD - Wheel PE


 -30 °C - +80 °C

 **swivels easily**

 **wear resistant**

 **shock proof**

 **floor protective**

 **weather proof**

## Wheel



Casted high quality nylon wheel







## Fork



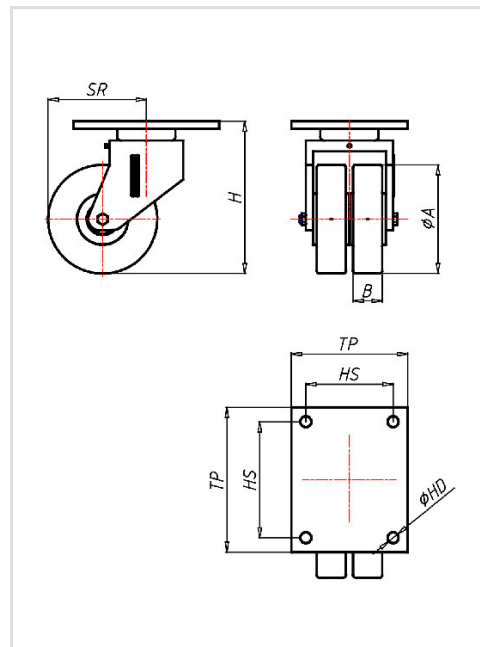
For applications where a super strong and durable caster is required, one tapered roller and one axial ball bearing, dust protection ring, very strong integrated Kingpin, locked nut, grease nipple, wheel axle bolted, finish – painted

Swivel castor	Wheel-Ø A x width B mm: 150x40+40
Load Capacity kg:	1400
Load capacity tested according to EN 12530 and EN 12527	
Overall height H mm:	210
Dimension of top plate TP mm:	200x160
Hole spacing HS mm:	160x120
Hole-Ø HD mm:	15
Swivel radius SR mm:	141
Wheel bearing:	Ball bearing

## Advantages

-  for extra heavy loads
-  easy running on smooth floors
-  impact proof
-  high abrasion resistance
-  easy to clean
-  high chemical resistance

©Copyright 2024 Rollenbau GmbH, www.rollenbau.at 17.04.2024



## Applications

- Metal-Technology
- Heavy duty dollies
- Trash container trucks
- Machinery moving dollies
- Workshops
- Racks
- Building-Industry